

1952 OCT 25 AM 10 57

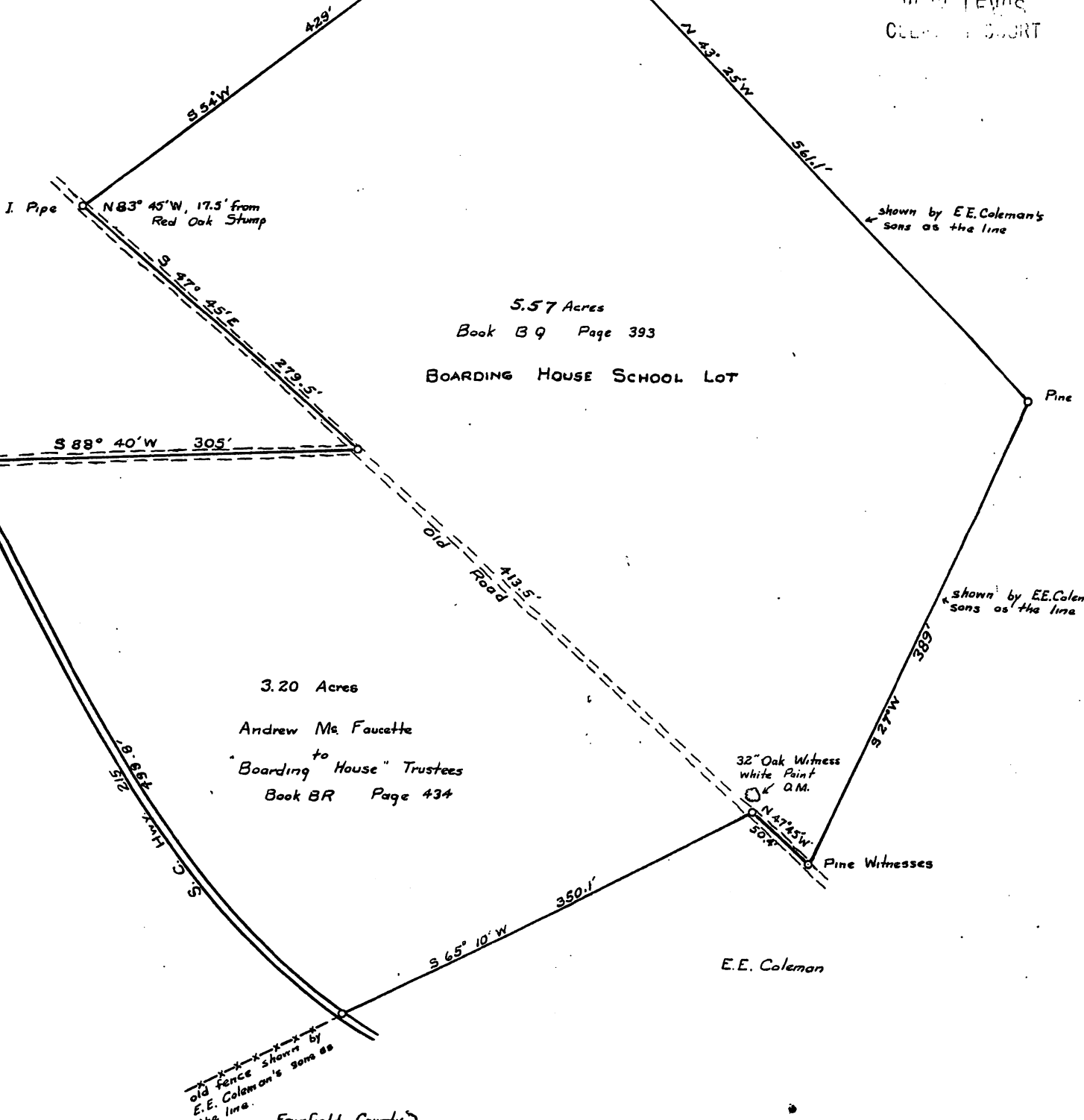
FAIRFIELD COUNTY S.C.
W. W. LEWIS
CLERK OF COURT

N 54° 45' W 13' from China Berry III O.M.

I. Pipe of N 30° E, 76 1/2' from Boarding House Spring

Spring

Nathaniel Jones



5.57 Acres

Book B 9 Page 393

BOARDING HOUSE SCHOOL LOT

3.20 Acres

Andrew Mc Faucette
to
"Boarding House" Trustees
Book BR Page 434

32" Oak Witness
White Point
O.M.

Pine Witnesses

E.E. Coleman

Fairfield County }
South Carolina }

At the request of the Trustees of the Boarding House Property, I have surveyed the above Tract of land in the Feasterville section and found it to contain 8.77 Acres and have metes and boundaries as above shown. Further information may be had by referring to above books in the Clerk's Office in Winnsboro, S.C.

Scale: 1"=100'

SURVEYED BY: Floyd D. Griffin, Jr. Reg. L.S.
Oct. 19, 1952

FRANIC

BOARDING HOUSE